

# Immunofluorescent Titers in H. Pylon

Pages with reference to book, From 255 To 255

Madam, Sera of 20 healthy subjects and 40 patients with dyspepsia were tested for H. pylon antibodies using immunofluorescent technique. Antigen was prepared from the local strain of H. pylon obtained from antral biopsy cultures. Antigen was placed on the wells of immunofluorescent slides, air dried and fixed. Doubling dilution of sera were made and indirect immunofluorescence was run using anti Human IgG fluorescein labelled conjugate. Leitz Wetzlar fluorescent microscope was used to read results and

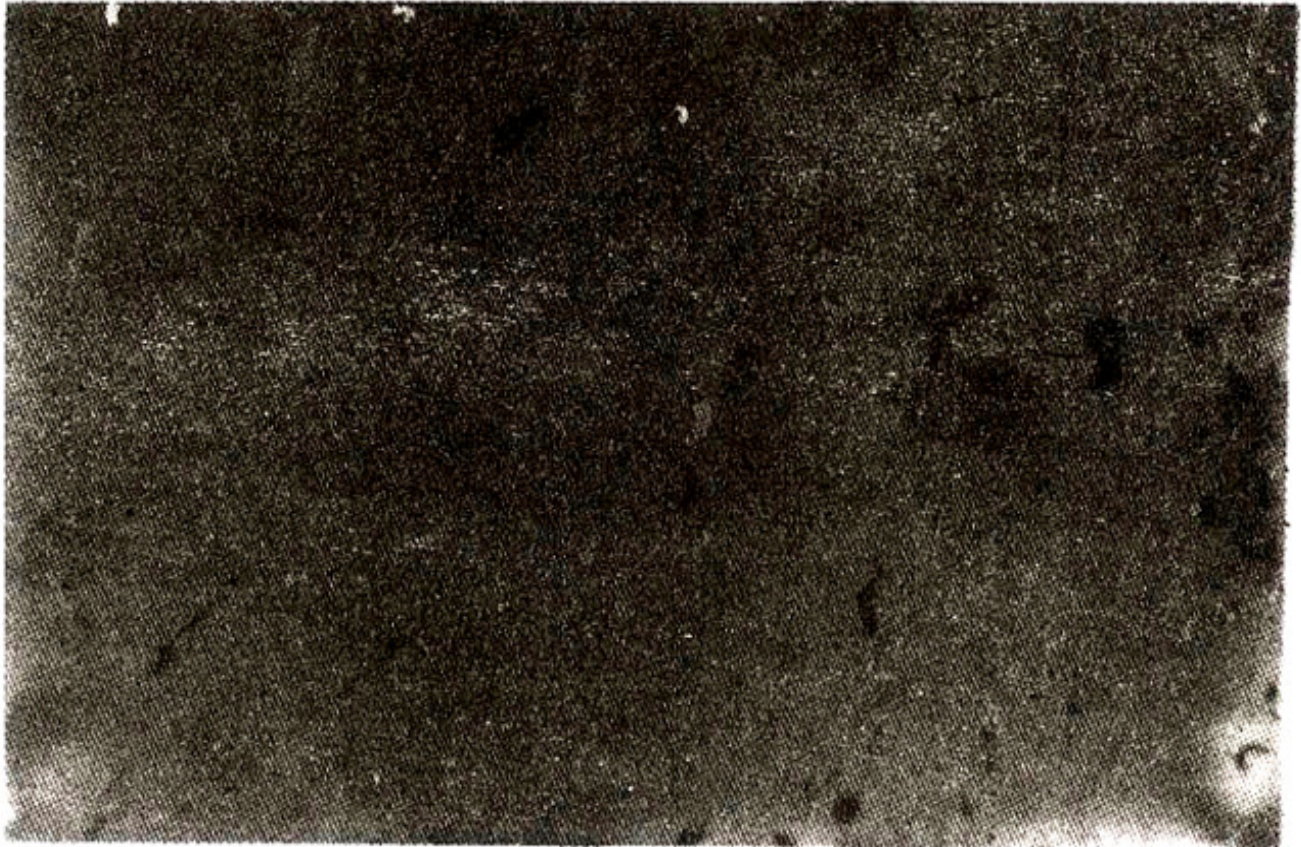


Figure. Helicobacter pylori as seen on fluorescent microscopy.

figure shows fluorescing spiral shaped H. pylon at magnification of X10. All sera were positive for M. pylon antibodies but titres were low in controls (Table).

Antibody	1:16	1:32	1:64	1:128	1:256	1:512
Control						
Sera (20)	1 (5%)	10 (50%)	4 (20%)	3 (15%)	2 (10%)	-ve

In 40 symptomatic patients the titres were >1:4096. Immunofluorescent test is very sensitive and can be used for screening of symptomatic patients with H. pylori infection.