

Foetal and Maternal Survey

Pages with reference to book, From 280 To 281

Farhat J. Jumshyd (Lady Dufferin Hospital, Kaiachi.)

- C.V.S. a) Heart - within thoracic cage (Fig. 1) heart pulsations and visualisation of four chambers of the heart (Fig 2).
b) Aortic arch and dorsal aorta (Fig 3 and Fig 4).
c) Three vessels in foetal umbilical cord (Fig. 5).

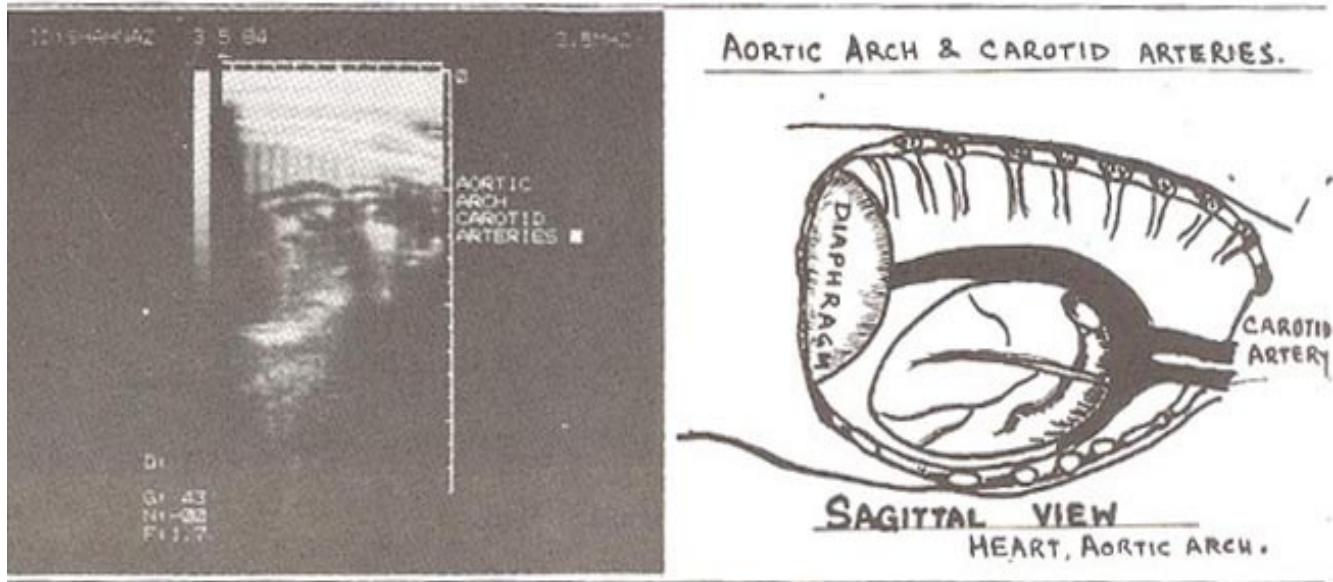


Fig. 1. Sagittal View. Heart, Aortic Arch.

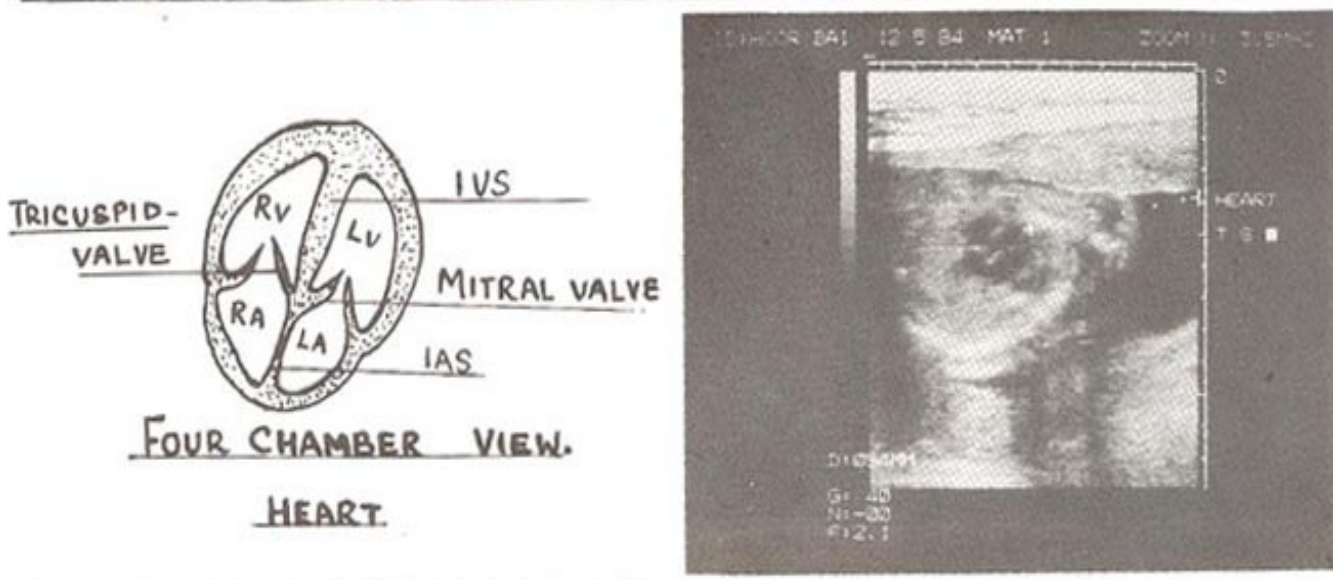


Fig. 2. Four Chamber view. Heart.

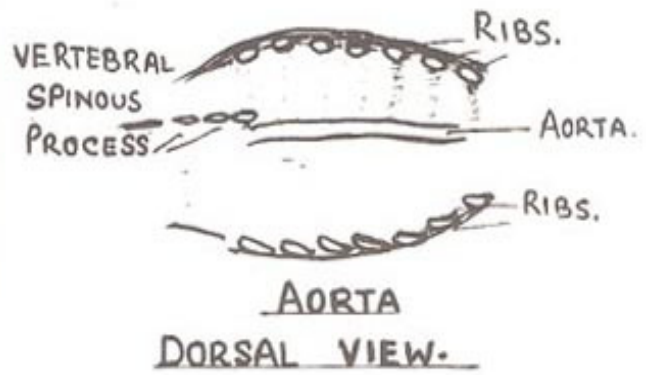
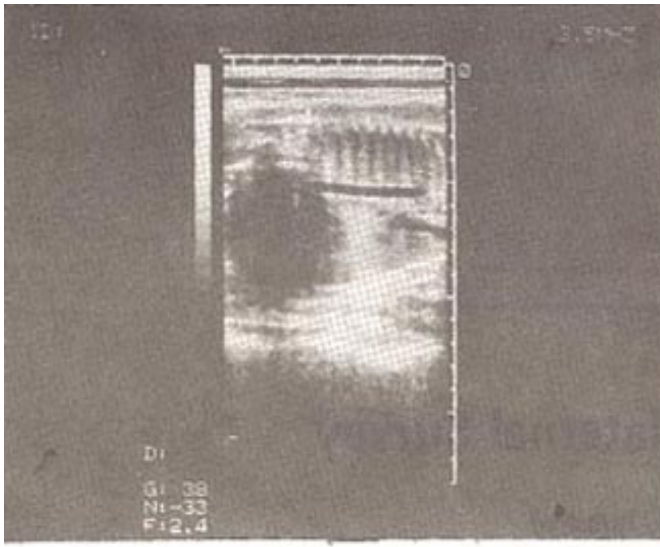


Fig. 3. Aorta Dorsal View.

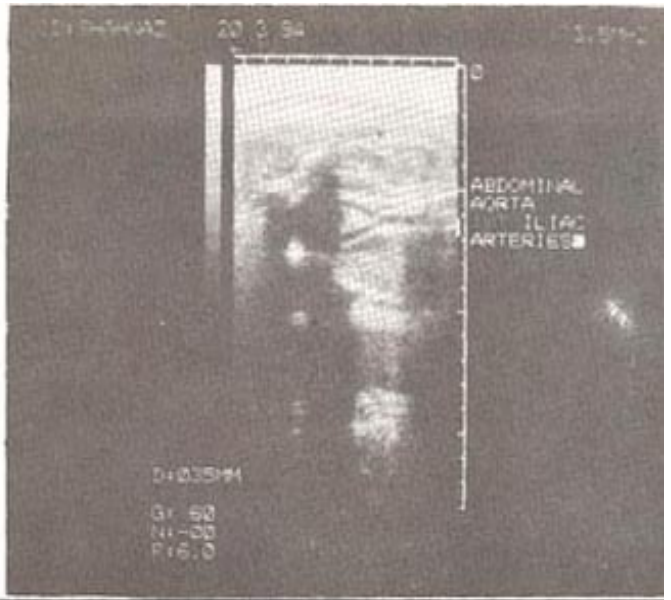
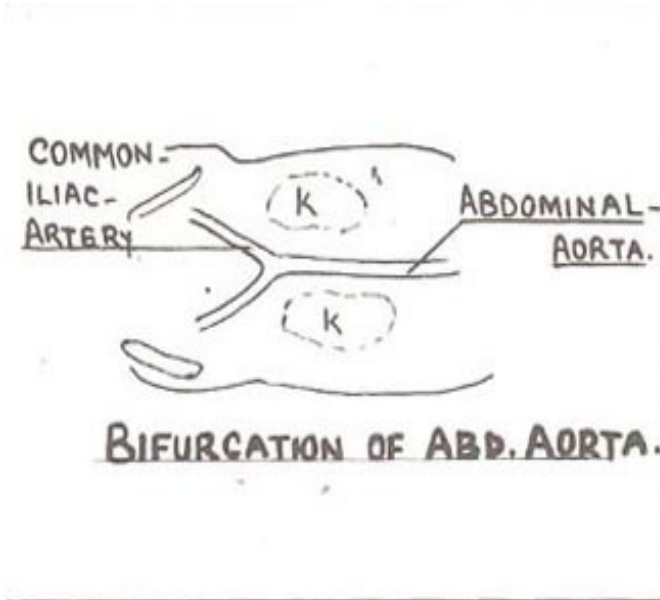


Fig. 4. Bifurcation of Abd. Aorta.